

PETROLEUM TECHNOLOGY COMPANY

The Artificial Lift Company



SAFELIFT-C

1.0", 1.5", 1.75" - orifice gas lift valve

www.ptc.as

SAFELIFT-C

The PTC SafeLift-C is a spring activated orifice gas lift valve with a true metal-to-metal seal which is qualified as a well barrier.

Built on a combination of streamlined design, few moving parts and an optimized material composition – the SafeLift is a very robust valve ideal for long life service in a harsh environment (H₂S, CO₂).

In addition the SafeLift-C introduces features to improve the lifetime when chemicals are present in the injected gas, and a valve coating on flow wetted parts in order to reduce scale problems.

The SafeLift-C valve is designed to be retrofit to all side-pocket mandrels in the market according to ISO 17078-2. It is designed, built and tested in accordance to ISO 17078 part 1 & 2 (E4, Q1, V1, F1) and ISO 14310-V1/V0.

PTC

www.ptc.as

For further information contact PTC at: post@ptc.as
+47 51 95 08 00 or +1 281 378 4776 or +44 (0)1224 57 93 50

THIS DOCUMENT IS UNPUBLISHED AND IS THE PROPERTY OF PTC. IT MAY NOT BE COPIED, REPRODUCED OR DISCLOSED IN ANY FORM.

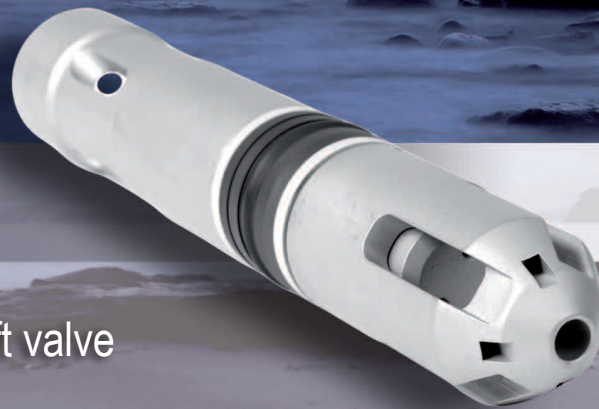
PETROLEUM TECHNOLOGY COMPANY

The Artificial Lift Company

SAFELIFT-C

1.0" - Orifice gas lift valve

www.ptc.as



SAFELIFT-C

The PTC SafeLift-C is a spring activated orifice gas lift valve with a true metal-to-metal seal which is qualified as a well barrier.

Built on a combination of streamlined design, few moving parts and an optimized material composition – the SafeLift is a very robust valve ideal for long life service in a harsh environment (H₂S, CO₂).

In addition the SafeLift-C introduces features to improve the lifetime when chemicals are present in the injected gas, and a valve coating on flow wetted parts in order to reduce scale problems.

The SafeLift-C valve is designed to be retrofit to all side-pocket mandrels in the market according to ISO 1 7078-2. It is designed, built and tested in accordance to ISO 17078 part 1 & 2 (E4, Q1, V1, F1) and ISO 14310-V1/V0.

DESIGN SPECIFICATIONS

Description	SafeLift™ 1.0"
Service	CO ₂ , H ₂ S Unique Service (pp H ₂ S ₀ = 20 bar)
Valve Body Material	Inconel 718 OTHER MATERIAL AVAILABLE ON REQUEST
Extension Material	17-4 PH
Spring Material	MP35N
Elastomer Material	ENDURA/REINFORCED PTFE
Seat Protection	TFF HARD SURFACE COATING
Maximum OD	1.01"
Length	12.3"
Orifice Size	1/8" to 5/16"
Stealth Orifice Available (venturi type)	Yes
Pressure Rating	5 000 PSI (Standard) 7 500 PSI (P1)
Temperature Rating	55 °C to 121 °C (Standard) 4 °C to 121 °C (T0) 55 °C to 149 °C (T1) 55 °C to 185 °C (T2) 55 °C to 200 °C (T3)
Leak Criteria for FAT Test	V1 (V0 available upon request)
Thread Connectin	11/16" - 16 UNS- 2
Certification/Qualification	ISO 17078-1 & 2 ISO 14310-V1/V0 ISO 15156

PTC

www.ptc.as

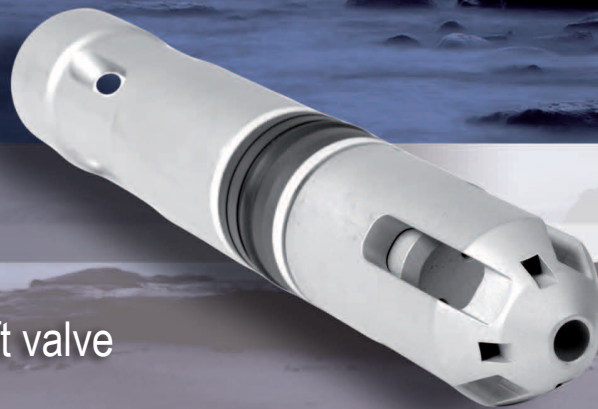
For further information contact PTC at: post@ptc.as
+47 51 95 08 00 or +1 281 378 4776 or +44 (0)1224 57 93 50

PETROLEUM TECHNOLOGY COMPANY

The Artificial Lift Company

SAFELIFT-C

1.5" - Orifice gas lift valve



www.ptc.as

SAFELIFT-C

The PTC SafeLift-C is a spring activated orifice gas lift valve with a true metal-to-metal seal which is qualified as a well barrier.

Built on a combination of streamlined design, few moving parts and an optimized material composition – the SafeLift is a very robust valve ideal for long life service in a harsh environment (H₂S, CO₂).

In addition the SafeLift-C introduces features to improve the lifetime when chemicals are present in the injected gas, and a valve coating on flow wetted parts in order to reduce scale problems.

The SafeLift-C valve is designed to be retrofit to all side-pocket mandrels in the market according to ISO 17078-2. It is designed, built and tested in accordance to ISO 17078 part 1 & 2 (E4, Q1, V1, F1) and ISO 14310-V1/V0.

DESIGN SPECIFICATIONS

Description	SafeLift™ 1.5"
Service	CO ₂ , H ₂ S Unique Service (pp H ₂ S ₀ = 20 bar)
Valve Body Material	Inconel 718 OTHER MATERIAL AVAILABLE ON REQUEST
Extension Material	17-4 PH
Spring Material	MP35N
Elastomer Material	ENDURA/REINFORCED PTFE
Seat Protection	TFF HARD SURFACE COATING
Maximum OD	1.5"
Length	21.65"
Orifice Size	1/8" to 1/2"
Stealth Orifice Available (venturi type)	Yes
Pressure Rating	5 000 PSI (Standard) 7 500 PSI (P1) 10 000 PSI (P2)
Temperature Rating	55 °C to 121 °C (Standard) 4 °C to 121 °C (T0) 55 °C to 149 °C (T1) 55 °C to 185 °C (T2) 55 °C to 200 °C (T3)
Leak Criteria for FAT Test	V1 (V0 available upon request)
Thread Connectin	1-1/16" - 18 UNEF- 2
Certification/Qualification	ISO 17078-1 & 2 ISO 14310-V1/V0 ISO 15156

PTC

www.ptc.as

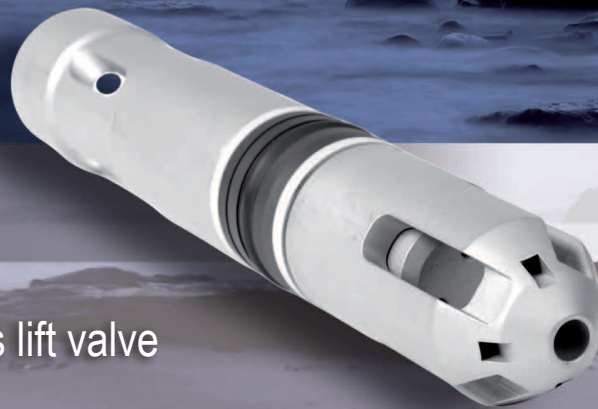
For further information contact PTC at: post@ptc.as
+47 51 95 08 00 or +1 281 378 4776 or +44 (0)1224 57 93 50

PETROLEUM TECHNOLOGY COMPANY

The Artificial Lift Company

SAFELIFT-C

1.75" - orifice gas lift valve



www.ptc.as

SAFELIFT-C

The PTC SafeLift-C is a spring activated orifice gas lift valve with a true metal-to-metal seal which is qualified as a well barrier.

Built on a combination of streamlined design, few moving parts and an optimized material composition – the SafeLift is a very robust valve ideal for long life service in a harsh environment (H₂S, CO₂).

In addition the SafeLift-C introduces features to improve the lifetime when chemicals are present in the injected gas, and a valve coating on flow wetted parts in order to reduce scale problems.

The SafeLift-C valve is designed to be retrofit to all side-pocket mandrels in the market according to ISO 17078-2. It is designed, built and tested in accordance to ISO 17078 part 1 & 2 (E4, Q1, V1, F1) and ISO 14310-V1/V0.

DESIGN SPECIFICATIONS

Description	SafeLift™ 1.75"
Service	CO ₂ , H ₂ S Unique Service (pp H ₂ S ₀ = 20 bar)
Valve Body Material	Inconel 718 OTHER MATERIAL AVAILABLE ON REQUEST
Extension Material	17-4 PH
Spring Material	MP35N
Elastomer Material	ENDURA/REINFORCED PTFE
Seat Protection	TFF HARD SURFACE COATING
Maximum OD	1.7"
Length	25.6"
Orifice Size	1/8" to 0.7"
Stealth Orifice Available (venturi type)	Yes
Pressure Rating	5 000 PSI (Standard) 7 500 PSI (P1) 10 000 PSI (P2)
Temperature Rating	55 °C to 121 °C (Standard) 4 °C to 121 °C (T0) 55 °C to 149 °C (T1) 55 °C to 185 °C (T2) 55 °C to 200 °C (T3)
Leak Criteria for FAT Test	V1 (V0 available upon request)
Thread Connectin	1-1/16" - 18 UNEF- 2
Certification/Qualification	ISO 17078-1 & 2 ISO 14310-V1/V0 ISO 15156

PTC

www.ptc.as

For further information contact PTC at: post@ptc.as
+47 51 95 08 00 or +1 281 378 4776 or +44 (0)1224 57 93 50